



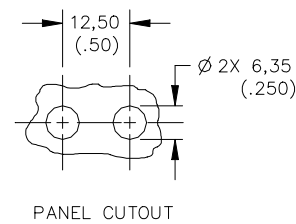
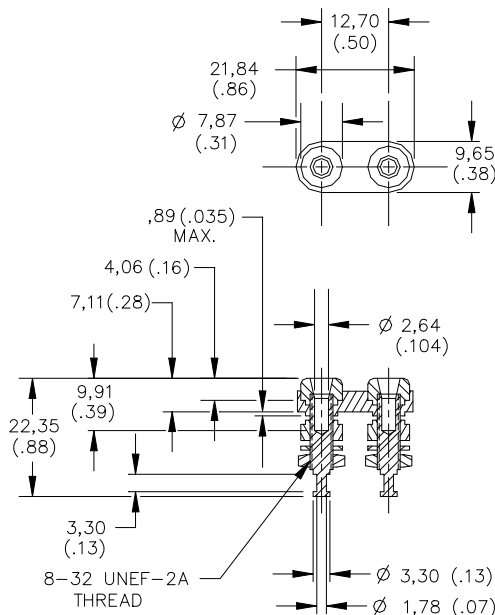
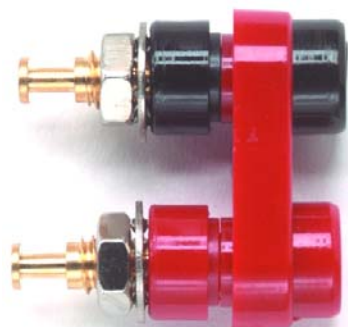
PEWA
Messtechnik GmbH

Weidenweg 21
58239 Schwerte

Tel.: 02304-96109-0
Fax: 02304-96109-88
E-Mail: info@pewa.de
Homepage : www.pewa.de

Model 2143

Double Miniature Banana Jack



MODEL NO.	MTG. PLATE COLOR
2143-0	BLACK PLATE
2143-2	RED PLATE

Features

- Accepts miniature banana plugs.
- Mounts in panels up to .188" thick.

Materials

Miniature Banana Jack:

Body – Gold plated brass
Lockwasher #8 – Nickel Plated Steel
Hex Nut #8-32 – Nickel Plated Brass
Insulation – Polycarbonate, Color: One Red and one Black
Panel Insulator – Polycarbonate

Ratings

Operating Voltage:	For <i>CE Compliance</i> and for personal safety, do not hold in hand when voltages exceed 30 Vrms/60 Vdc. Maximum voltage for <i>hands free use</i> : 1500 Vrms. Do not use on circuits where transient stresses can exceed the rated voltage.
Operating Temperature:	+115°C (+239°F) Max.
Operating Current:	5 Amperes Max.

Ordering Information

Model: 2143-*

* = Standard Mounting Base Color: -0 Black, -2 Red

Ordering Example: 2143-2, Mounting Base Color is Red.

USA: Sales: 800-490-2361
Technical Support: technicalsupport@pomona-test.com
Fax: 425-446-5844

Europe: 31-(0) 40 2675 150 **International:** 425-446-5500

Where to Buy: www.pomonaelectronics.com

All dimensions are in inches. Tolerances (except noted): .xx = $\pm .02"$ (.51 mm), .xxx = $\pm .005"$ (.127 mm). All specifications are to the latest revisions. Specifications are subject to change without notice. Registered trademarks are the property of their respective companies.