

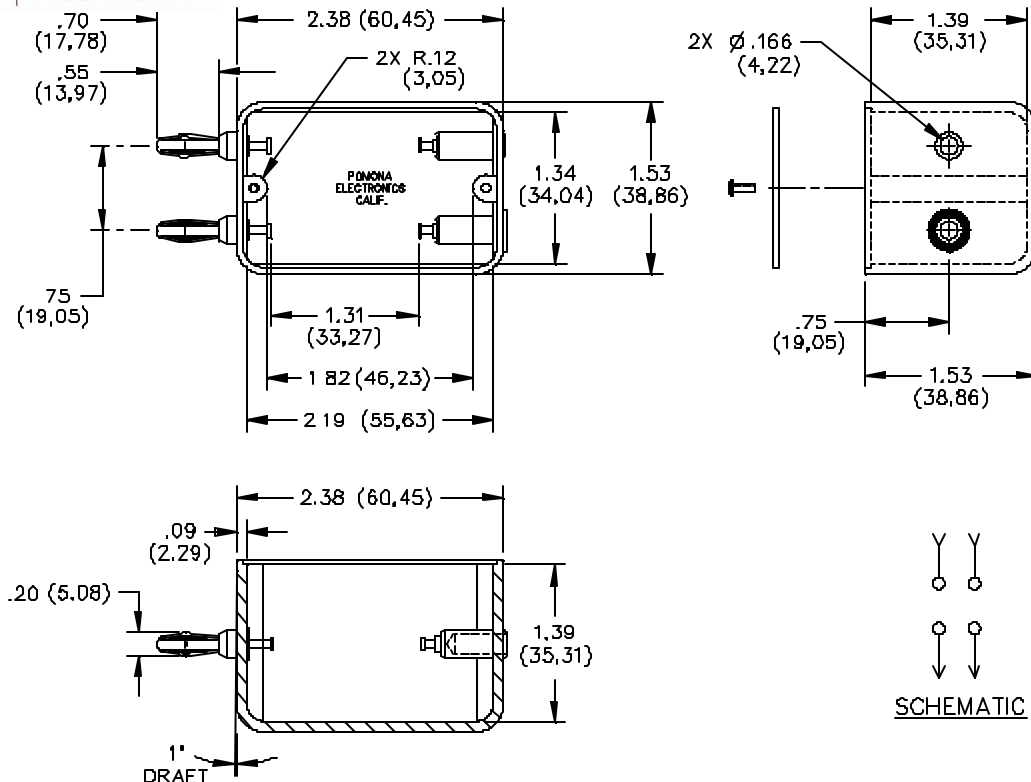
Pomona®



PEWA
Messtechnik GmbH
Weidenweg 21
58239 Schwerte
Tel.: 02304-96109-0
Fax: 02304-96109-88
E-Mail: info@pewa.de
Homepage: www.pewa.de

Model 2224 Phenolic Box Component Mounting Banana Jack To Double Plug

Operating Temperature: +150°C. (+302°F.) Max.



MATERIALS:

Banana Plug Springs: Beryllium Copper
Finish: Nickel plated
Polarity Marker: Color: Red
Banana Plug Bodies, Solder Turret Terminals and
Banana Jacks: Brass, Alloy 360 ½ Hard.
Finish: Bright tin plated
Molded Housing: Electrical grade phenolic. Color:
Black

Marking: "MODEL 2224 POMONA
ELECTRONICS CALIF."

Screws: 2 Ea.. #2-56 x (3/16") P. Head – Steel

Cover: Phenolic Plate. Color: Black

ORDERING INFORMATION: Model 2224

RATINGS:

All dimensions are in inches. Tolerances (except noted): .xx = ±.02" (.51 mm), .xxx = ±.005" (.127 mm).
All specifications are to the latest revisions. Specifications are subject to change without notice.
Registered trademarks are the property of their respective companies. Made in USA

6/9/99

SY/EH/LS

S:\Engineering\Release\DataSheets\FlukeDataSheet\d2224_1_01.doc

Sales: 800-490-2361 Fax: 888-403-3360
Technical Assistance: 800-241-2060

PomonaACCESS 90133 (800) 444-6785 or (425) 446-6010
More drawings available at www.pomonaelectronics.com

Page 1 of 1