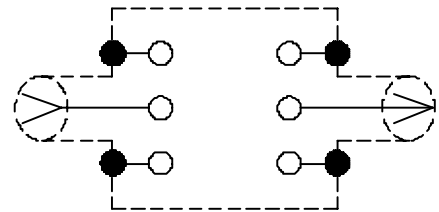
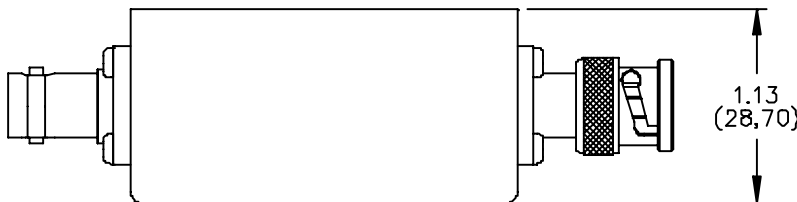
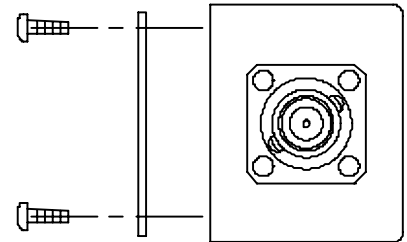
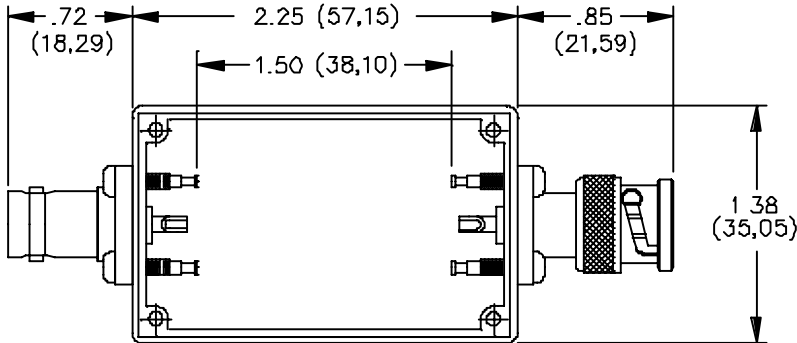


**Model 3231**  
**Size B Aluminum Box With Cover**  
**BNC Male/Female**



SCHMATIC

**MATERIALS:**

Connector: BNC (M) & BNC (F)

Body: Tarnish Resistant Plating, Center Contact: Male – Gold Plated Brass, Female – Gold Plated Beryllium Copper

Solder Turret Terminal Screws: Steel

Shielded Housing: Die cast aluminum alloy 380 or 384.

Finish: Blue baked enamel per Fed. Std. 595 25109 over Phosphoric Etch

Cover: 1.02 (.040) thick aluminum #1100-H14

Finish: Clear anodized

Screws: 4 each #2-32 x 1/4". Pan head self-tapping. Steel.

**RATINGS:**

Operating Voltage: Inner conductor/Shield: 1000 VRMS Max.

Operating Temperature: -55°C to +150°C

Nominal Impedance: 50 Ohms

**ORDERING INFORMATION: Model 3231**

All dimensions are in inches. Tolerances (except noted): .xx = ±.02" (.51 mm), .xxx = ±.005" (.127 mm).  
All specifications are to the latest revisions. Specifications are subject to change without notice.  
Registered trademarks are the property of their respective companies. Made in USA