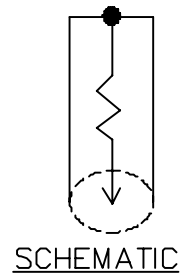
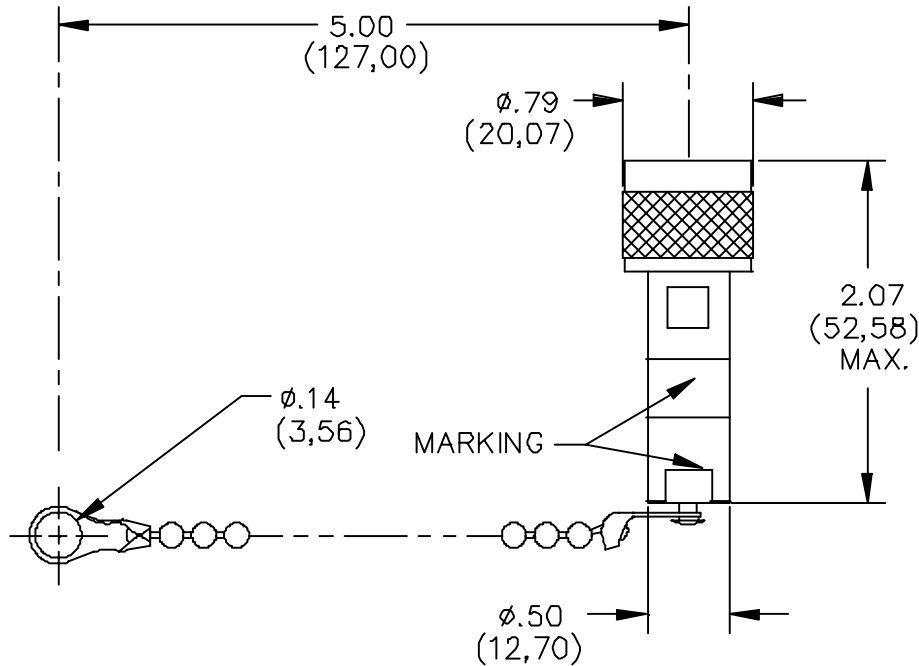


## Model 4240 Type "N" Male Terminated Plug



### MATERIALS:

Body and Fittings: Brass, Tarnish Resistant Plating.

Center Contact: Brass, Gold Plated.

Dielectric: Teflon

Gasket: Silicone rubber

Resistor: Deposited carbon film

Marking: "Pomona 4240"

Label: "TERM, \*Ω 1W"

### RATINGS:

Frequency Range: DC to 500 MHz

Resistance Tolerance:  $\pm 1\%$

Power: 1W @ 70°C Max.

### ORDERING INFORMATION: Model 4240-\*

\*= Resistance Value 50, 75, 600

Ordering Example: 4240-50 = 50 Ohm Value Resistance

All dimensions are in inches. Tolerances (except noted): .xx =  $\pm .02$ " (.51 mm), .xxx =  $\pm .005$ " (.127 mm).

All specifications are to the latest revisions. Specifications are subject to change without notice.

Registered trademarks are the property of their respective companies. Made in USA