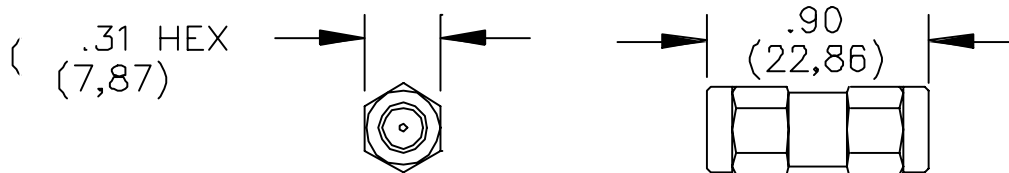


**Model 4283**  
**Adapter, SMA, Male to Male**



**MATERIALS:**

Body and Coupling Nut: Gold Plated Beryllium Copper per QQ-C-530, Cond. HT

Center Contact: Gold Plated Brass

Insulation: Teflon per L-P-403

Finish: Body, Coupling Nut and Contact: Gold Plated Brass per MIL-G-45204, Type II, Class 2

**RATINGS:**

Operating Temperature: -65°C. (-85°F.) to +165°C. (+329°F.)

Operating Voltage: 1000 VRMS, 60 Hz at sea level

Insulation Resistance: 5000 Megohms Min.

**ORDERING INFORMATION:** Model 4283

All dimensions are in inches. Tolerances (except noted): .xx = ±.02" (.51 mm), .xxx = ± .005" (.127 mm).  
 All specifications are to the latest revisions. Specifications are subject to change without notice.  
 Registered trademarks are the property of their respective companies.

Made in USA