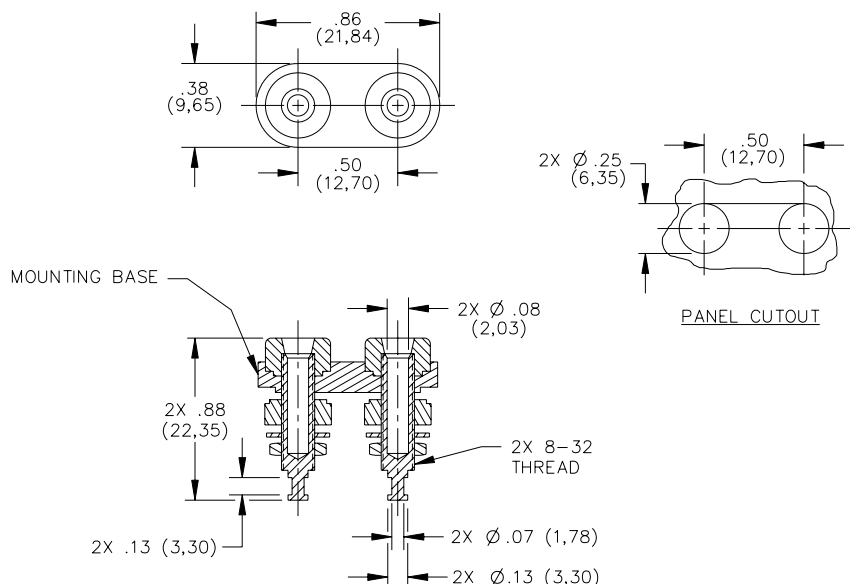


Model 4543

Insulated Double Pin Tip Jack



FEATURES:

- Accepts .080 dia. pin
- Max. panel thickness .188.

MATERIALS:

Miniature Insulation: Polycarbonate Thermoplastic molded to pin tip. Color: One Red and one Black.

Mounting Plate Insulation: Polycarbonate Thermoplastic

Panel Insulator: Polycarbonate Thermoplastic. Color: Matches color of pin tip jack insulator.

Lockwasher #8: Internal Tooth: Steel, Finish: Nickel plate per QQ-N-290 Class 2 (.0002 min.)

Hex Nut #8-32: Brass, Finish: Nickel plate per QQ-N-290 Class 2 (.0002 min.).

Pin Tip Jack Body: Gold Plated Brass H.H., Alloy 360

Spring: One piece Beryllium Copper, Berylco 25

Finish: Gold flash per MIL-G-45204 Type 2 .00001/.00002 over electroless nickel per MIL-C-26074A, Class 2, .0002/.0003 thick.

RATINGS:

Operating Temperature: +115°C. (+239°F.) Max.

Operating Voltage: 1500 VDC

Current: 5 Amperes

ORDERING INFORMATION: Model 4543-*

* = Mounting Base Color, Standard Colors: -0 Black, -2 Red

All dimensions are in inches. Tolerances (except noted): .xx = ±.02" (.51 mm), .xxx = ±.005" (.127 mm).

All specifications are to the latest revisions. Specifications are subject to change without notice.

Registered trademarks are the property of their respective companies.

Made in USA