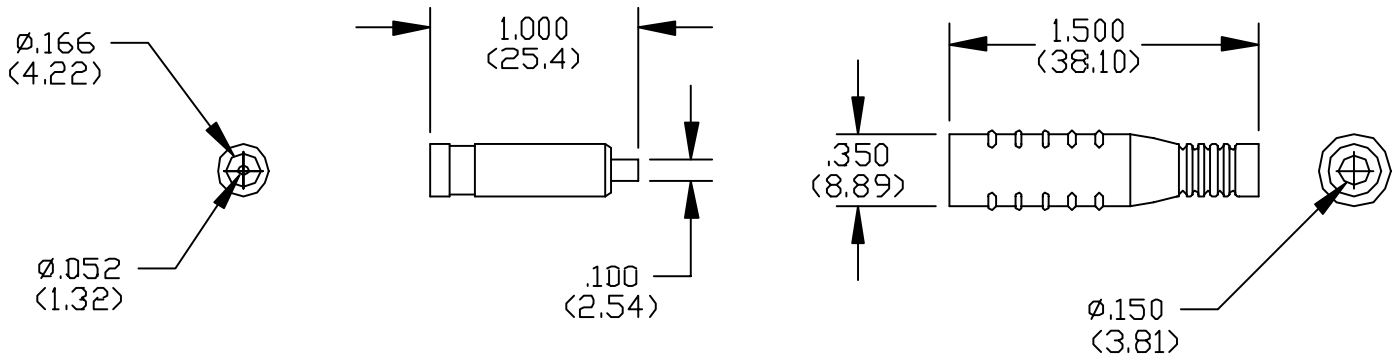


Model 5167

Do-It-Yourself In-Line Banana Jack With Flexible Boot



FEATURES:

- This in-line banana jack is ideal for making patch cords and field repairs.
- A snap-on two piece design allows the wire to be crimped or soldered to the banana jack
- Part will accept 18, 20, 22 AWG wire, crimp or solder connection.
- Use with Model #5169 to build a custom extension cable.

MATERIALS:

Body: Brass per QQ-B-626, Alloy 360, ½ Hard.

Insulation: Flexible PVC.

Marking: "POMONA"

Finish: Body – Nickel plated per QQ-N-290, Class 2, 200/300 micro-inches.

RATINGS: (Independent of Wire)

Operating Temperature: +50°C.(+122°F.) Max.

Voltage: Hand-held testing: 30VAC/60VDC Max.

Hands free testing in controlled voltage environments: 5000 WVDC Max.

Current: 15 Amperes

ORDERING INFORMATION: Model 5167-*

*= Color, -0 Black, -2 Red

Ordering Example: 5167-0, Color is Black

Other colors available on special request.

All dimensions are in inches. Tolerances (except noted): .xx = ±.02" (.51 mm), .xxx = ±.005" (.127 mm).

All specifications are to the latest revisions. Specifications are subject to change without notice.

Registered trademarks are the property of their respective companies. Made in USA