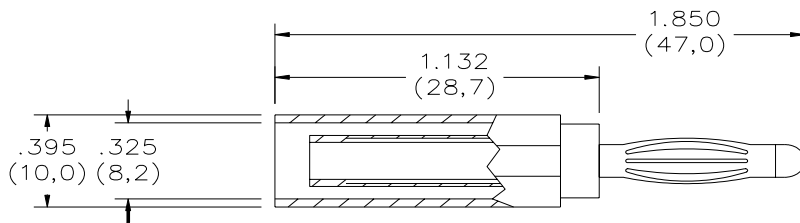


## Model 6728

### Adapter, Standard Sheath Banana Jack to Non-Sheath Banana Plug



#### Features:

- ✓ Adapter provides an easy and quick conversion from a standard sheathed banana plug / patch cord to a standard exposed banana plug.
- ✓ Allows standard sheathed banana plugs / patch cords to connect to non-sheath style banana jacks or blinding post.
- ✓ Ideal for environments using a mixture of sheathed and non-sheathed style patch cords.

#### Materials:

Banana Jack:	Nickel Plated Brass
Banana Plug:	Nickel Plated Beryllium Copper
Insulation:	Nylon 6

#### Ratings:

Voltage:	600 Vrms; For <i>CE compliance</i> : not intended for hand held use at voltage above 33 Vrms / 70 Vdc.
Current:	20 A max
Temperature:	-10 to +55 C

#### Ordering Information:

6728-0	Black
6738-2	Red

All dimensions are in inches. Tolerances (except noted): .xx = ±.02" (.51 mm), .xxx = ±.005" (.127 mm).

All specifications are to the latest revisions. Specifications are subject to change without notice.

Registered trademarks are the property of their respective companies. Made in USA

Sales: 800-490-2361 Fax: 888-403-3360 Technical Assistance: 800-241-2060  
For "Where to Buy" information, visit the Pomona web site at [www.pomonaelectronics.com](http://www.pomonaelectronics.com)