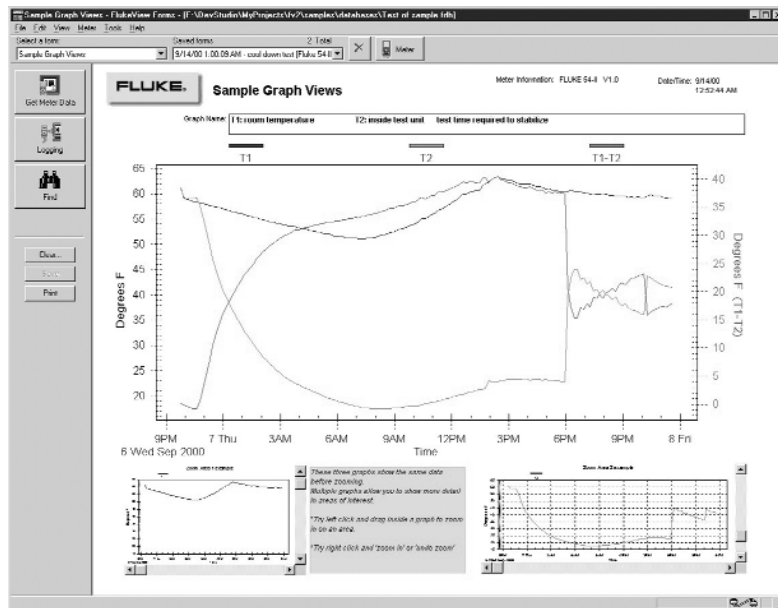


## FlukeView® Forms Software version 2.1

### Technical Data

Expand the power of the world's most rugged, accurate handheld test tools with FlukeView® Forms Documenting Software.



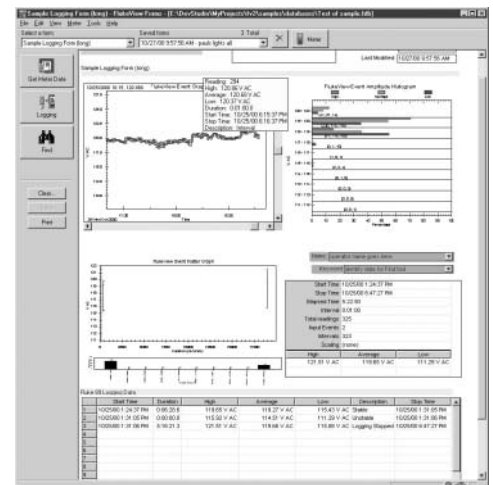
To address the increasing demands for reporting and documentation, Fluke presents FlukeView® Forms Documenting Software. FlukeView Forms increases the power of your Fluke Digital Multimeter, Thermometer and ProcessMeter® by enabling you to document, store and analyze individual readings or series of measurements, then convert them into professional-looking documents.

With FlukeView® Forms documenting software, the logging capabilities of handheld test equipment can be used to solve tough problems. For example, leave a Fluke 189 meter in place to log up to 995 readings. Then download the readings into FlukeView Forms to spot trends and document interruptions and spikes. Professionals can review and compare data from up to 8 different meters on the same document – providing analysis capabilities that a meter alone can't provide.

And it's easy to use. FlukeView® Forms comes with standard analysis and reporting forms. These forms can be customized or modified for easy use by less experienced staff. Information stored in Fluke's software can be ported to other common programs.

#### New in Version 2.1

- Display logged readings from multiple meters on a single graph
- Forms and data can now be copied between FlukeView Forms databases, so that they contain only the data you want them to
- Fluke 789 ProcessMeter™ fully supported
- Tables for Display Readings can now be extensively customized



#### FlukeView Forms can be used in many different applications – here is one of many success stories from a satisfied Flukeview Forms customer.

A Flukeview Forms user working in the development labs of a leading engineering company in Arlington, WA, found the data logging power of Fluke digital multimeters and thermometers invaluable in his evaluation of power inverter designs. He utilized FlukeView Forms software during environmental and load testing to record a wide range of voltages, currents and temperatures. Then he transferred his data to a spreadsheet application on his computer, compiled the results and packaged an evaluation report with a minimum of effort and time. With an upgrade to version 2.1, it is now possible to combine his results on one form at the time the data is transferred from the meters, without the need to use another application.

# Specifications

Fluke Meter	FlukeView Forms Model (cable specific to meter)
53-II, 54-II Thermometers	FVF-SC1
87-IV, 89-IV DMMs	FVF-SC1
183, 185, 187, 189 Series DMMs	FVF-SC2
789 ProcessMeter™	FVF-SC2
45 Bench Meter	FVF-SC3
Upgrade package only (no cable)	FVF-UG

Features of version 2.1	Supported for Meters			
	189, 89-IV	187, 789, 45, 87-IV	53-II, 54-II	183, 185
<b>PC link to meter</b>				
Retrieves data stored in meter's internal memory	•		•	•
Interactively log data while meter is connected to PC	•	•		•
Copy single reading from meter display to form	•	•		•
Change meter settings from PC	•	•	•	•
Clear meter memory from PC	•		•	•
<b>Supports "event logging" for easier, more detailed analysis of data</b>				
Retrieves min/max and event data from meter's internal memory	•			
Supports interactive event logging with meter connected to PC	•	•		•
Customize event threshold for event logging to meter's internal memory	•			
Customize event threshold for interactive event logging	•	•		•
<b>Displaying data</b>				
Display meter data on choice of standard forms, in graphs and tables	•	•	•	•
Graphs and tables on form automatically adjust to display data correctly	•	•	•	•
Comments and additional data can be added by user	•	•	•	•
Choice of Auto-zoom or custom zoom for graphs	•	•	•	•
<b>Form features</b>				
Selection of sample forms available	•	•	•	•
FlukeView Forms Designer software included for customizing forms	•	•	•	•
Data from up to 8 meters can be viewed and stored on a single form	•	•	•	•
Forms can be saved with meter and user comments for later review	•	•	•	•
Logged readings from several meters can be displayed on the same graph	•	•	•	•
<b>Printing</b>				
Print Forms	•	•	•	•
Print Preview	•	•	•	•
Support for printing of long tables	•	•	•	•
<b>Additional features</b>				
Scale readings to customized units	•	•	•	•
Export data to .CSV file	•	•	•	•
Backwards-compatible with data from previous versions of FlukeView Forms	•	•	•	•
<b>Documentation</b>				
Printed Getting Started Guide	•	•	•	•
User's Manual (Adobe® Acrobat format)	•	•	•	•
Tutorials (Adobe® Acrobat format)	•	•	•	•
Connecting to the Meter instruction page (Adobe® Acrobat format)	•	•	•	•
Technical Notes, available on FlukeView Forms CD and <b>www.fluke.com</b> (Adobe® Acrobat format, English only)	•	•	•	•
Windows Help for software	•	•	•	•

## PC System requirements

- Windows® 95, 98, 2000, Me, NT 4.0, or Windows® XP
- 70 MB hard disk space (100 MB to install)
- RS-232 serial port
- Mouse or other pointing device

## Minimum recommended PC hardware

- Pentium class or better microprocessor
- 32 MB RAM
- SVGA or better display

## Software and documentation localized for:

- English
- German
- French
- Italian
- Spanish
- Japanese
- Simplified Chinese

**Fluke. Keeping your world up and running.**

**Fluke Corporation**  
PO Box 9090, Everett, WA USA 98206

**Fluke Europe B.V.**  
PO Box 1186, 5602 BD  
Eindhoven, The Netherlands

**For more information call:**  
In the U.S.A. (800) 443-5853 or  
Fax (425) 446-5116  
In Europe/M-East/Africa (31 40) 2 675 200 or  
Fax (31 40) 2 675 222  
In Canada (800)-36-FLUKE or  
Fax (905) 890-6866  
From other countries +1 (425) 446-5500 or  
Fax +1 (425) 446-5116  
Web access: <http://www.fluke.com/>

©2003 Fluke Corporation. All rights reserved.  
Trademarks are the property of their respective owners.  
Specifications subject to change without notice.  
Printed in the Netherlands. 5/2003  
Pub\_ID: 10629-eng Rev. 01