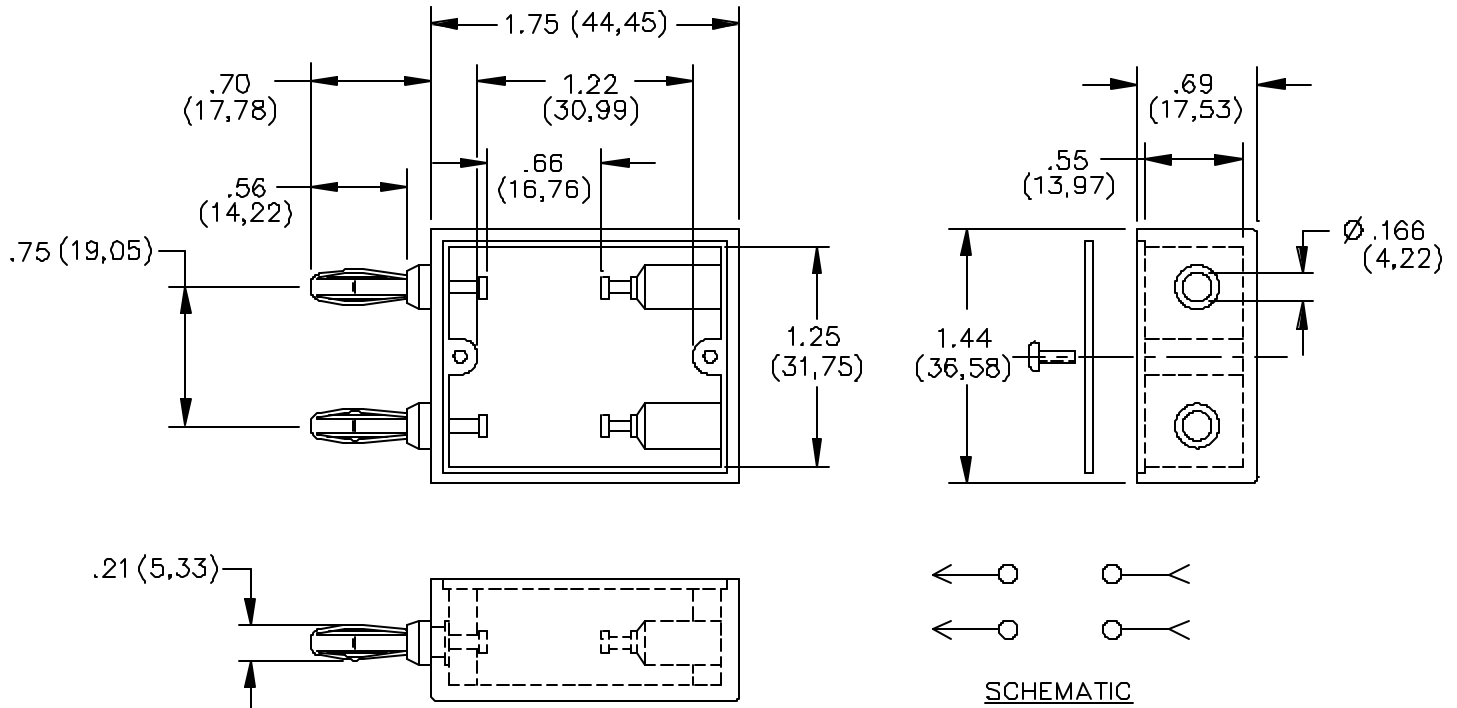


## Model 2098 Phenolic Box Component Mounting Banana Jack To Double Plug



### MATERIALS:

Polarity Marker: Color: Red

Banana Plug Springs: Beryllium Copper, Cond. H.T.

Finish: Nickel plated per QQ-N-290, Class 2, 200/300 microinches

Banana Plug Bodies: Brass, Alloy 360 ½ Hard.

Finish: Nickel plated

Solder Turret Terminals and Banana jacks: Brass, Alloy 360 ½ Hard

Finish: Bright tin plated.

Molded Housing: Electrical grade Phenolic. Color: Black

Marking: "MODEL 2098 POMONA ELECTRONICS CALIF."

Cover: Phenolic Plate. Color: Black

Screws: 2 ea. #2-56 x (3/16") Pan HD. - Steel

### RATINGS:

Operating Temperature: +150°C. (+302°F.) Max.

Current: 15 Amperes

All dimensions are in inches. Tolerances (except noted): .xx = ±.02" (.51 mm), .xxx = ±.005" (.127 mm).

All specifications are to the latest revisions. Specifications are subject to change without notice.

Registered trademarks are the property of their respective companies. Made in USA

**ORDERING INFORMATION:** Model 2098

All dimensions are in inches. Tolerances (except noted): .xx =  $\pm .02$ " (.51 mm), .xxx =  $\pm .005$ " (.127 mm).  
All specifications are to the latest revisions. Specifications are subject to change without notice.  
Registered trademarks are the property of their respective companies. Made in USA